

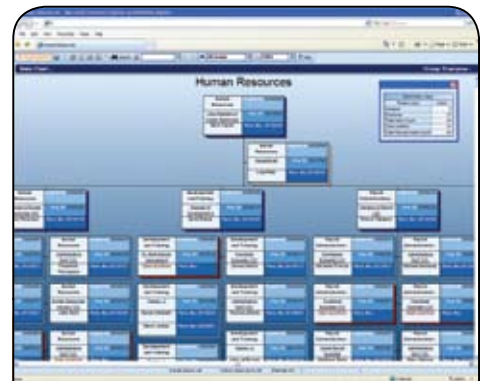
THE MOST TRUSTED NAME IN ENTERPRISE ORGANIZATIONAL CHARTING AND REPORTING

As the pioneer of the enterprise organizational charting market, Acquire has spent more than a decade helping organizations visually analyze, manage and model vital workforce information. More than 2,500 companies around the world use Acquire solutions to manage workforces totaling more than 10,000,000 people.

EXTENDING THE VALUE OF SAP

As a certified SAP Software Partner, Acquire leads the market with innovative solutions that are optimized for SAP environments. Acquire offers highly-integrated solutions with SAP R/3® and mySAP ERP® Human Capital Management (HCM) solutions. OrgPublisher™ for SAP solutions provides functionality that rapidly enables users to chart, view, model and analyze organizational hierarchies and human capital information contained within SAP.

- > Selected by an industry-leading 700+ SAP customers across the globe
- > Unmatched in the total number of enterprise SAP installations supporting 25,000-150,000 employees
- > Integrates easily with SAP Enterprise Portal and SAP HCM Organizational Management functions including PPOM, PPOME and MDT
- > Rapid installation and chart configuration using simple step-by-step wizards
- > No custom ABAP™ coding required
- > Access any standard or custom info type
- > Display manager views using point-down hierarchies
- > Integrated security to limit access to sensitive information



With OrgPublisher you can quickly produce secure, information-rich workforce management reports and organizational charts.

Solution Overview

Enterprise Organizational Charting

- > **Chart Design Templates** – Professionally designed chart templates will make your charts look better than ever
- > **Simple Chart Creation** – Automated wizards guide you through the entire chart creation process
- > **Multiple Data Sources** – Easily bring together and chart workforce information from SAP and other systems
- > **Reporting Relationships** – Chart various types of reporting relationships including person-to-person, position-to-position and matrix reporting relationships
- > **Configurable Styles** – Create multiple views using the same source of information including cost centers, organizational units, geographic regions, etc.
- > **Microsoft® and Adobe® Integration** – Easily transfer data from OrgPublisher to Microsoft® PowerPoint, Microsoft® Excel and Adobe® PDF®
- > **Chart Legend** – Easily define chart contents with a configurable legend
- > **Flexible Printing** – Wall chart and book style printing along with numerous printing optimization features



OrgPublisher can access data from virtually any source and instantly populate reports with headcount figures, payroll information, performance data and more.

Analysis

- > **Summary Engine** – Easily generate workforce analytics and organizational statistics such as headcounts, open positions, etc.
- > **Search and Groups** – Search and reporting capabilities provide users with access to pre-defined queries and powerful search tools
- > **Chart Spotighting** – This innovative feature visually spotlights people and positions across the organization that match your search
- > **Hover Profile** – View detailed information about a person or position by moving your mouse over a specific box - also, displays a pop-up information window for rapid analysis
- > **Smart Links** – Link directly to additional information sources such as documents, applications, etc.
- > **Click and Drag Scrolling** – Use your mouse to scroll the chart in any direction

Planning And Modeling

- > **OrgPlan™** – Simplify organizational planning activities in a secure, Web-based modeling environment
- > **Drag-and-drop** – Make changes using simple drag-and-drop editing tools
- > **Change Reporting** – Quickly generate reports to analyze proposed changes

Succession Planning

- > **Pre-Configured Succession Plan Templates** – Quickly create, visualize and analyze succession plans
- > **Custom Data Layouts** – Easily create information-rich box layouts to highlight any number of succession planning data elements
- > **Group Analysis** – Rapidly analyze candidates and plans

Archiving

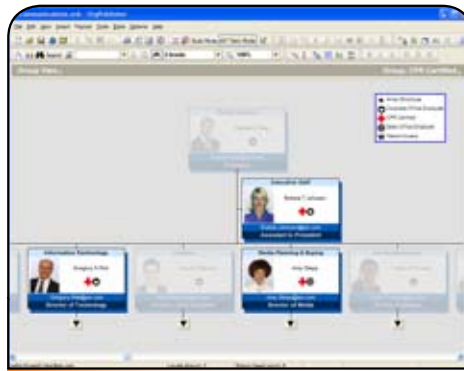
- > **OrgHistory™** – Automate the regular archival of organizational charts
- > **Chart Comparison Reporting** – Easily review differences between two organizational charts to understand what changes have been made between different time periods
- > **Security Seal** – Protects the integrity of your chart archives

Orgpublisher Extensions

- > **Real-time Charting Extension** – This add-on option delivers real-time data access to SAP HCM data. It also leverages all defined SAP security authorizations to automatically restrict data access and it is tightly integrated with the SAP NetWeaver Portal. Contact an Aquire representative for more information.

Technical Information

- > Supports SAP® versions 4.7, 5.0 and 6.0
- > Browser-based viewing and administration options include thin-client (zero install) and rich-client (ActiveX plug-in)
- > Various data access methods include real-time data access and/or scheduled, batch data transfers
- > Extensive support for enterprise data sources including relational databases, XML, CSV, LDAP/AD, etc.
- > Powerful security options allow administrators to control data elements, chart navigation, features and single sign-on
- > Proven reliability and performance has been demonstrated with companies charting up to one million employee records
- > Developer's kit provides a powerful application programming interface for simple integrations



Quickly locate people that match your search criteria using Chart Spotlighting.



Quickly create custom organizational charts and reports for specific workforce management initiatives.

North American Office

5215 N. O'Connor Blvd.
Suite 300
Irving, TX 75039 USA
Phone: +1 214.574.5020
Fax: +1 214.574.5014
Toll-free: +1 888.674.2427

Aquire United Kingdom, Ireland and Africa

Enterprise House
5 Roundwood Lane
Harpenden
Hertfordshire
AL5 3BW
United Kingdom
TEL: 0845 371 7085
TEL (outside the UK): +44 1582 463489

Aquire Europe and Middle East

BCB Bachstrasse 1
CH-9606 Bütschwil,
Sankt Gallen
Switzerland/Schweiz/Suisse
TEL: 043 5004165
TEL (outside Switzerland): +41 43 500 4165