

## The world's leading automated organizational charting solution now offers more capabilities, power, simplicity and choices

Delivering integration with SAP®, PeopleSoft®, Oracle® and other systems, OrgPublisher 9 delivers a friendlier, faster user interface, more rapid chart deployment, new chart formatting options—along with wizards to guide you—as well as enhanced security.

### Solution Overview

#### Automatically Create & Share Org Charts

With OrgPublisher 9 you'll easily and automatically aggregate and chart workforce information from enterprise systems such as HR, CRM, talent management and other data sources. Automatically create charts, validate workforce information, and get powerful printing, easy searching and ad-hoc queries to produce results in Excel spreadsheets.

Other improvements include:

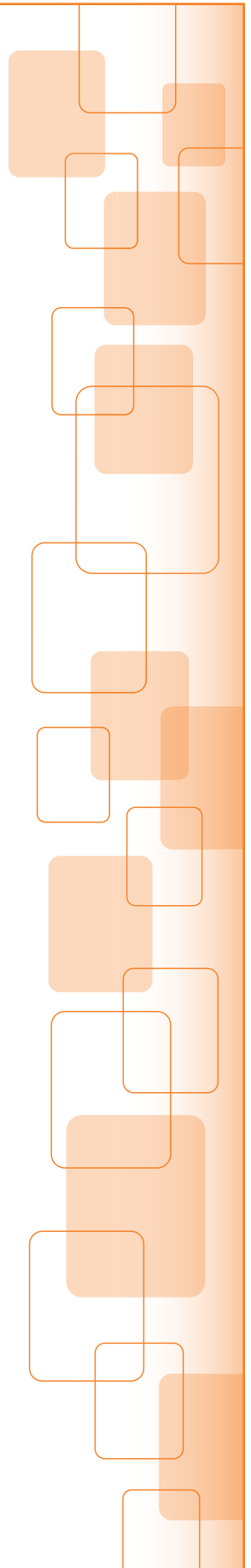
- > **Charting & Graphing** – Increase the visibility of KPIs and HCM metrics while analyzing headcounts, workforce composition and other vital information
- > **Express Publishing** – Chart deployment is now only two clicks away
- > **Style Wizard** – Easily define your window layout and chart design from a list of professionally designed templates
- > **Personalization** – Decide how information will display when you open your org chart Web page
- > **Enhanced Employee Profiles** – More information about each employee can be organized into a Profile view with tabbed displays
- > **Tabbed Chart Styles** – All charts are now only a click away via a tabbed format, making more information easily available
- > **Tabbed Company Visualization** – Create multiple chart and graph views with different detail and summary information in a simple tabbed format
- > **Dynamic Chart Layouts** – Switch chart layouts with the click of a button
- > **Role-based Toolbars and Chart Views** – Pre-defined corporate roles mean you have the ability to, for example, designate a single user to control actions like printing
- > **Toolbar Search Enhancements** – Searching is easier and more powerful with improved capabilities such as search-within-a-search

#### OrgPublisher 9 features

- > **Simple chart creation** – Automated wizards guide you
- > **Design templates** – Your charts will look better than ever
- > **Multiple Data Sources** – Easily bring together and chart workforce information from enterprise systems such as HR, CRM, talent management and any other data source
- > Web-based administration for simplicity and ease of use
- > **Configurable styles** – Create multiple views using the same source of information including cost centers, organizational units, geographic regions, etc.
- > **Reporting relationships** – Chart various reporting relationships including person-to-person, position-to-position and matrix reporting
- > **Microsoft® and Adobe® integration** – Easily transfer data from OrgPublisher to Microsoft® PowerPoint, Microsoft Excel and Adobe® PDF®
- > **Chart legend** – Easily define chart contents with a configurable legend
- > **Flexible printing** – Choose from wall chart and book-style printing along with numerous printing optimization features
- > **Chart action buttons** – This innovative visual feature indicates when additional user action and information is available
- > **Simple integration** – Link to other applications using hotspots



With OrgPublisher you can quickly produce secure, information-rich workforce management reports and organizational charts.



- > Email alerts for system administrators when recursion or broken hierarchies are detected
- > **Secure** – Single sign-on support and granular data access control
- > **Browser-based viewing options** – Thin client (zero install) and rich client (ActiveX plug-in)

#### Analysis

- > **Search and Groups** – Search and reporting capabilities provide users with access to pre-defined queries along with powerful ad-hoc search tools
- > **Summary Engine** – Easily generate workforce analytics and organizational statistics such as headcounts, open positions, etc.
- > **Chart spotlighting** – This innovative feature visually spotlights people and positions across the organization that match your search
- > **Hover profile** – View detailed information about a person or position by moving your mouse over a specific box—also displays a pop-up information window for rapid analysis
- > **Smart links** – Create hotspots and link directly to additional information sources such as documents, applications, etc.
- > **Click and drag scrolling** – Click and drag your mouse to scroll the chart in any direction
- > **Hierarchical rollup of key business metrics**
- > **OrgHistory™ Chart Archival & Analysis** – Automatically generate historical organizational archives and view change reports

#### OrgPublisher 9 Technical Information

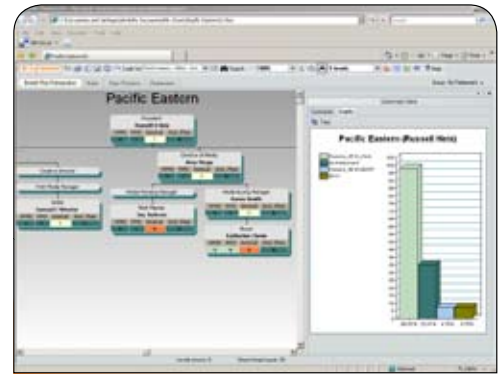
- > Various data access methods include real-time and/or scheduled batch data transfers
- > Extensive support for enterprise data sources including relational databases, XML, CSV, LDAP/AD, etc.
- > Developer's kit provides a powerful application programming interface for simple integrations
- > Available in English, European French, German, Italian, Brazilian Portuguese and Latin American Spanish

#### New: OrgPublisher 9 Premier for succession planning, organizational planning and all the robust charting power you expect from OrgPublisher

If your organization needs to track its talent to insure its future leadership, and wants the capability to model and add efficiency to organizational changes, your choice is OrgPublisher 9 Premier. Offering all the robust charting capabilities of OrgPublisher, Premier also provides succession planning and organizational planning capabilities.

#### Access even more robust succession planning and organizational modeling with the new OrgPublisher Module Series.

For more powerful succession and planning capabilities, add our new Succession and Modeling Modules. Easy to deploy and use, and offering more powerful tools than those built into OrgPublisher 9 Premier, the Modules integrate seamlessly with OrgPublisher to help you cost-effectively collaborate and solve your most pressing HR challenges.



View charts and graphs that contain detailed statistics and data to improve workforce decisions across the organization.



Quickly capture and visualize detailed workforce information such as compensation numbers, budgets, headcounts, and more.

#### North American Office

5215 N. O'Connor Blvd.  
Suite 300  
Irving, TX 75039 USA  
Phone: +1 214.574.5020  
Fax: +1 214.574.5014  
Toll-free: +1 888.674.2427

#### Aquire United Kingdom, Ireland and Africa

Enterprise House  
5 Roundwood Lane  
Harpenden  
Hertfordshire  
AL5 3BW  
United Kingdom  
TEL: 0845 371 7085  
TEL (outside the UK): +44 1582 463489

#### Aquire Europe and Middle East

BCB Bachstrasse 1  
CH-9606 Bütschwil,  
Sankt Gallen  
Switzerland/Schweiz/Suisse  
TEL: 043 5004165  
TEL (outside Switzerland): +41 43 500 4165